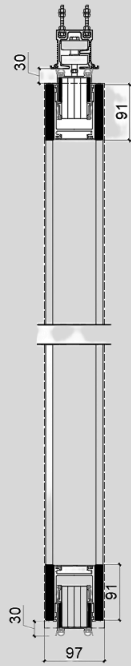


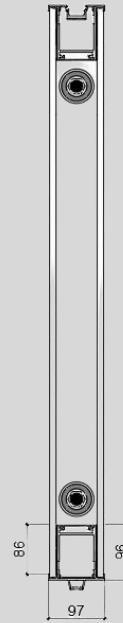
ARTE 97

PRODUCT SUMMARY

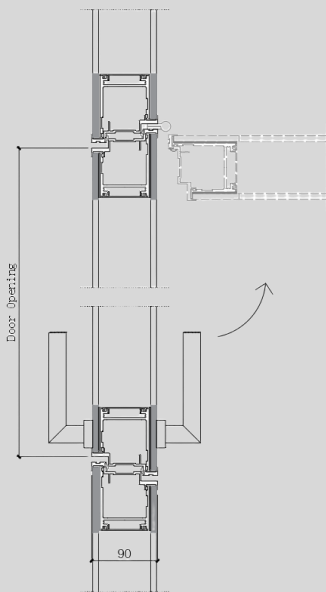
Product Overview



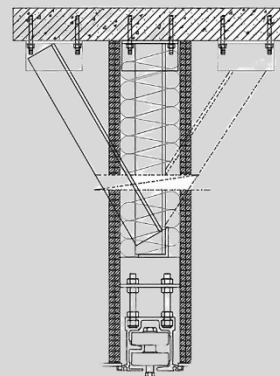
Section Detail



Plan Detail



Door Detail



Bulkhead Detail

Structure	Double-Glazed Partition with 5mm mild steel angle support bars: <ul style="list-style-type: none"> • The glass is fitted without the use of silicone • Adjustable structure • Top and Bottom Retractable mechanism • Height of base channel = 30mm • Thickness of structure = 90mm • Height of head channel = 30mm
Door Options	<ul style="list-style-type: none"> • Variable ultra clear tempered glass (back painted around edges) • Handle Lock c/w stainless steel handle and hinges
Finishes	Aluminium Profile: <ul style="list-style-type: none"> • Anodised or polyester powder coated finish Door frame: <ul style="list-style-type: none"> • Matt or powder coated Glazing: <ul style="list-style-type: none"> • Clear float • Toughened • Low iron • Acid etched • Acoustic laminated
Maximum Screen Height	<ul style="list-style-type: none"> • 3000mm subject to configuration and access into the building. Using 12mm clear toughened glass • Greater heights up to 4080mm can be achieved with 11.52mm acoustic laminated glass
Matching Options	Double Glazed: <ul style="list-style-type: none"> • 10mm toughened glass + 12mm toughened glass • 11.52mm acoustic laminated glass + 11.52mm acoustic laminated glass
Acoustic Rating	Double Glazed: <ul style="list-style-type: none"> • RW45db – 8mm toughened glass + 8mm toughened Glass Doors: <ul style="list-style-type: none"> • RW45db – 8mm toughened glass + 8mm toughened Glass

