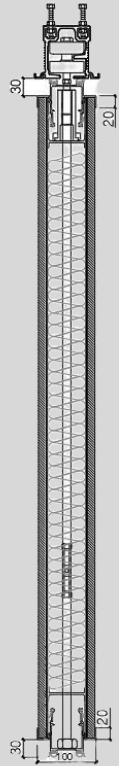


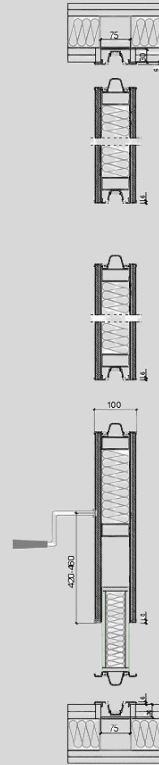
# ARTE 100S

## PRODUCT SUMMARY

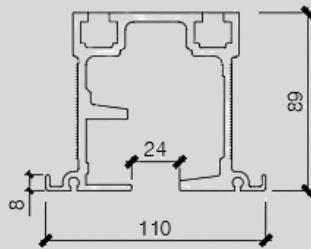
# Product Overview



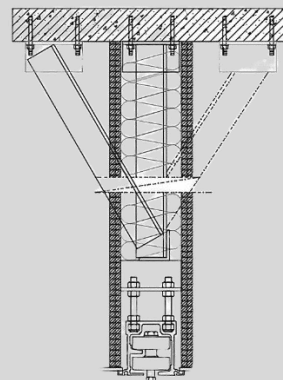
**Section Detail**



**Plan Detail**



**Track Detail**



**Bulkhead Detail**

<b>Structure</b>	Multilayered solid Partition with 5mm Mild Steel angle support bars : <ul style="list-style-type: none"> <li>• 15mm Multilayered board + 2mm sound insulation plate + 0.5mm Steel Plate</li> <li>• Adjustable structure</li> <li>• 70kg/m3 Rockwool</li> <li>• Top and bottom retractable mechanism</li> <li>• Height of base channel = 30mm</li> <li>• Thickness of structure = 100mm</li> <li>• Height of head channel = 30mm</li> </ul>
<b>Door Options</b>	<ul style="list-style-type: none"> <li>• 15mm Multilayered board</li> <li>• Handle lock c/w stainless steel handle and hinges</li> </ul>
<b>Finishes</b>	Aluminium Profile: <ul style="list-style-type: none"> <li>• Anodised or polyester powder coated finish</li> </ul> Solid Partition Finishes: <ul style="list-style-type: none"> <li>• Fabric, steel plate, aluminium plate, wallpaper, acoustic panel, back painted black and white board and laminate</li> </ul>
<b>Maximum Screen Height</b>	<ul style="list-style-type: none"> <li>• Subject to configuration and access into the building</li> <li>• Greater heights up can be achieved based on design</li> </ul>
<b>Acoustic Rating</b>	Solid Partition Panels: <ul style="list-style-type: none"> <li>• RW54dB excluding finishes</li> </ul>

